



FITMENT INSTRUCTIONS

Single Awning Side

DISCLAIMER

Preliminary information

All rights reserved.

No part of this document may be reproduced, translated, stored in a retrieval system. Or transmitted, in any form or by any means, electronic., mechanical, photocopying, recording or otherwise, without prior written permission of the owner. Review all instruction information carefully before installation. Any damages, direct or indirect to the installer and/or property due to incorrect installation of any parts are the responsibility of the installer. Due to the various application and firmment options available, the responsibility lies with the user to ensure all mounting points are secure and tight before every trip. If unsure, consult with your Distributor regarding the operations of our products. Users are advised to be mindful of the load they are carrying and drive in accordance with road conditions.

Service Enquiries email
queries@alu-cab.com



Installation Instructions

The tables below show the equipment, i.e. tools and fasteners required to install the Universal Awning Side

1.1

Hardware Required
Single Awning Side

Hardware Supplied
11 x Flexi-ties
9 x Pegs

Please be sure to lay out all parts provided on a table or flat surface in order to check that all required parts are accounted for and prevent potential frustration at a later stage.

Installation Instructions

STEP
1

Front and Rear Installation:

Open and extend your Awning. Once set-up attach the Universal Side to the Velcro Strip on the Awning as per images below. The wall attaches easily with velcro to the top of the awnings, as well as using velcro to attach to the two extra support poles.



Installation Instructions

STEP
2

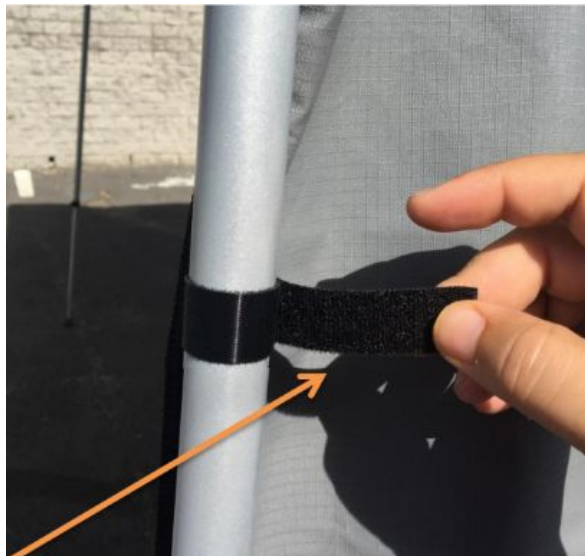
Side Installation - Loosen the Velcro for the Top flap as indicated in the image below to attach the Universal Side



Installation Instructions

STEP
3

Attaching Awning Pole Velcro Straps: For this step we need to fasten the Velcro Straps found on the Awning Side Canvas around the Awning Poles.



Velcro Straps on the Awning Sides Canvas



Tightened Velcro Straps on the Awning Sides Canvas

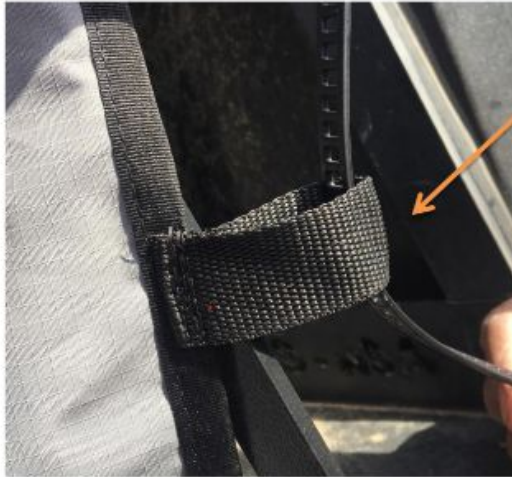
Installation Instructions

STEP
4

Flexi Tie Fastening of Sides: On the Side of the Awning Side, there are loops where we can thread through a Flexi Tie which we will use to attach the Canvas side to the vehicle. There are a few of these loops along the side of the Canvas so you just need to find any anchoring points you can on the vehicle.



Flexi Ties and Canvas Loops



Flexi Tie threaded through Canvas Loop



Various Fixture Points on the Vehicle

Installation Instructions

Installation Complete!



Disclaimer

All rights reserved. No part of this website may be reproduced, translated, stored in a retrieval system, or transmitted, in any form or by any means, electronic, mechanical, photocopying, recording or otherwise, without prior written permission of the owner.

Review all instructions information carefully before installation.

Any damages, direct or incidental to the installer and/or property due to incorrect installation of any parts are the responsibility of the installer. Due to the various applications and fitment options available, the responsibility lies with the user to ensure all mounting points are secure and tight before every trip.

If unsure, consult with your Distributor regarding the operations of our products.

Users are advised to be mindful of the load they are carrying and drive in accordance with road conditions.

WARNING

Always wear appropriate PPE (Personal protection equipment) when fitting our products. Although the mounting kit is designed to be DIY, if you have any doubts or concerns, contact an accredited fitment centre to carry out the work. Alu-Cab will not be liable for any injury to persons, and/or damage to products and/or vehicles.

While Alu-Cab Holdings takes reasonable measures to ensure that the contents of this Website are accurate and complete, Alu-Cab Holdings makes no representations or warranties, whether express or implied, as to the quality, timeliness, operation, integrity, availability or functionality of this Website or as to the accuracy, completeness or reliability of any information on this Website. Alu-Cab Holdings reserves the right to make changes, corrections and/or improvements to the information and to the products and programs described in such information, at any time without notice.

Alu-Cab Holdings will use reasonable endeavours to maintain the availability of the Website, except during scheduled maintenance periods, and reserves the right to discontinue providing the Website or the service or any part thereof with or without notice to you. Any person who accesses this Website or relies on this Website or on the information contained in this Website does so at his or her own risk.

Occasionally, at our discretion, we may include or offer third-party products or services on our website. These third-party sites have separate and independent privacy policies. We therefore have no responsibility or liability for the content and activities of these linked sites. Nonetheless, we seek to protect the integrity of our site and welcome any feedback about these sites.