

TOYOTA 100/105 SERIES WAGON

ROLLER DRAWER INSTALLATION TO ADR 34/02

1045 Series: Vehicle specific instruction and drawing

Optional Extension Floor and Side Floor Kits are supplied separately.

NOTE:

Do not elongate any holes

Read and understand all instructions before proceeding

Tub liner must be removed for correct fitment of side floors

*Throughout these instructions *rear refers to *rear of vehicle *front refers to *front of vehicle.*

INSTRUCTIONS ARE AVAILABLE FROM ARB STOCKISTS.

SECTION 1:- FRAME PREPERATION.....General Instructions- Supplied In Drawer Module

SECTION 2:- VEHICLE SPECIFIC INSTALLATION.....This Instruction

SECTION 3:- REASSEMBLY.....General Instructions- Supplied In Drawer Module

SECTION 4:- OPTIONAL STACKER DRAWER.....General Instructions- Supplied In Drawer Module

SECTION 5:- CUSTOM & INDIVIDUAL FIT.....General Instructions- Supplied In Drawer Module

2) VEHICLE SPECIFIC INSTALLATION:

– Ensure you have completed General Instructions Section One – Frame preparation before following this vehicle specific instruction.

The General instructions are supplied with the Outback Solutions Drawer Modules and are also available from your ARB stockist.

2.1/- 7 Seat Models:- Remove plastic covers and locking plates for rear dickie seat from under mat or carpet. Replace the four bolts closest to the centre of the vehicle, leaving four outer holes 570mm apart vacant. Cut mat and fold back “ears” to expose vacant bolt holes. Remove rear seat belts and plastic covers from mounts next to wheel arches and refit bolts.

5 Seat Models:- Fold rear floor matt back and measure forwards 745 mm from front edge of carpet protector strip. Pull back matt at this point and remove two rubber bungs from two holes closest to wheel arches 570 mm apart.

Remove rear tie down points from under matt or carpet. Then cut mat and fold back cut part under matt to expose vacant bolt holes. Remove child restraint point and refit bolt.

2.2/- With an assistant, carefully lift the frame into the vehicle taking care not to scratch the vehicle. Ensure the frame is oriented so the drawers will be accessible from the rear of the vehicle.

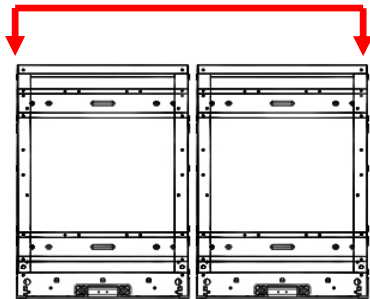
Vehicle Specific Instructions

2.3/- If fitting the optional side floor for drawer modules, attach front floor support wing brackets now.

Bolt the two brackets onto **front** outer corners of drawer frame by removing and reusing the existing two top outside 8mm hexagon head bolts, spring and flat washers from the **front** of drawer frame.



Skip this step if not fitting optional side floor.



2.4/-Side bracket installation:

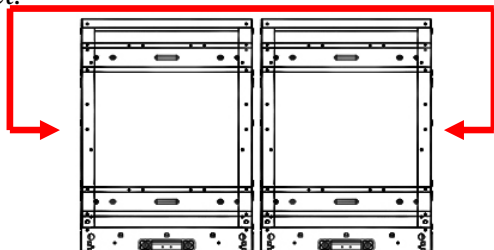
Bolt side brackets onto outsides of bearing channels using four (4) 6mm x 20mm hexagon head bolts.

Drawer with Fixed Floor Modules:

Loosely fasten two of the 6mm bolts into the two captive nuts inserted in outsides sides of bearing channels, slip the two top holes in side bracket over bolt heads, from inside of bearing channels fasten bottom of side bracket into the two captive nuts in bracket.

Drawer with Roller Floor Modules:

From inside of bearing channels fasten top and bottom of side bracket into the four captive nuts in bracket.



Vehicle Specific Instructions

2.5/-Side Fill Panel fixing position:

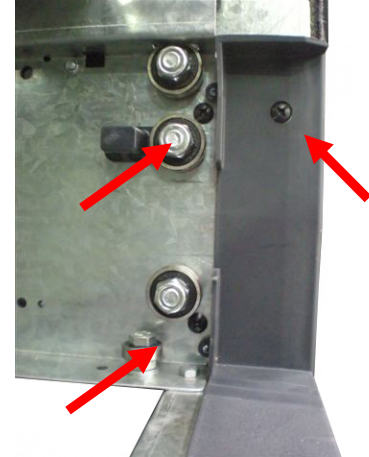
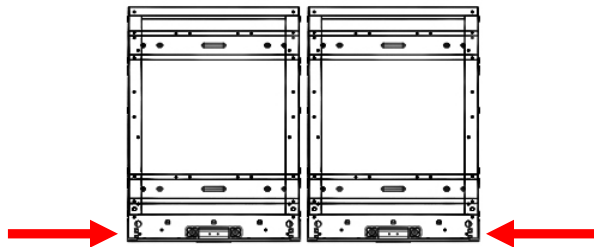
Position side fill panel onto outside of bearing channels by pushing/positioning side panels in from **front** of vehicle this allows carpet to fold back neatly against interior trim of vehicle.

Side Fill Panel fastening:

Fasten Side Fill Panel to outside of bearing channel using three (3) 6mm x 20mm black round head set screws.

First fasten through **top** hole in plastic fascia panel into captive nut in Side Fill Panel.

Second, fasten through holes in outside bearing channel located **top** and **bottom** of front bearings.



2.6/-Side Floor installation:

Using a 4mm hexagon head Allen key....

First fasten fixed floor section of floor onto Front Wing Panel and Side Bracket using four (4) black countersunk set screws.

Second clip the **front** locator clips on the underside of the removable floor section into slots in side bracket, fasten **rear** end down using latch.



2.7/- Positioning in vehicle – Center Left to right.

If fitting an optional Side Floor, maneuver assembly to ensure the gap between side floor and vehicle walls is equal on both sides- this centers the frame in the vehicle.

If **NOT** fitting an optional Side Floor, position the assembly central in the vehicle. Confirm for equal measurements on each side between the assembly and vehicle body.

2.8/- Positioning frame in vehicle – Front to rear.

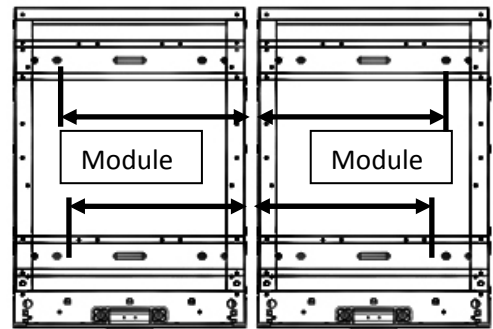
If fitting an optional **Extension Floor**, maneuver assembly to ensure the gap between side floor and rear of vehicle equal on both sides and there is sufficient freedom for the removable top panels to be released and removed.


If **NOT** fitting an **extension floor**. With the rear door of the vehicle closed, position the frame in the vehicle by measuring 198mm from the **centre** of the rear mount rail to a metal surface of the door.

Vehicle Specific Instructions

2.9/- Locate the four points marked on the mount rails in step 1.6. See (Figure “F” & “G” in the diagram on last page).

Front points can be loosely bolted into threaded points in the floor to stop the frame from moving at flowing steps.



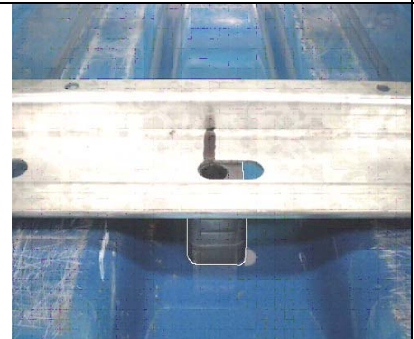
2.10/-  Rear points on 5 seat vehicles must be drilled. 7 Seat vehicles move to step 2.13. Ensure all clear under vehicle floor before drilling any holes. It is the responsibility of the fitter to ensure that drilling through the vehicle floor will not damage vehicle components. Check for items such as fuel lines, break lines, fuel tanks, spare tires and non standard accessories.

2.11/- Rear points on 5 seat vehicles must be drilled. 7 Seat vehicles move to step 2.13 Check frame is central in vehicle and where fitted, optional Floor and site floors are free to operate and equally spaced to the vehicle body.

Using a short body electric or battery powered drill and 10mm drill bit drill straight down through holes previously marked to the underside of vehicle. Ensure the frame does not move while drilling holes.

2.12/- Remove **all** drill swarf from vehicle and apply a rust preventive coating to drilled holes from underside of vehicle.

2.13/- Locate the four spacers assembled in step 1.9. Position the **four (4)** spacer blocks under the mount rails and line the hole up with the drilled hole in the floor and the mount rail. (Figure “F” & “G” in the diagram)



2.14/- Bolt frame down through drilled holes using **four (4) M10x40mm bolts, M10x70x40 flat plates** inside the vehicle at the front.

7 seat - **M10 X 40mm bolt** through 40mm x 75mm flat washer, hat section and spacer.

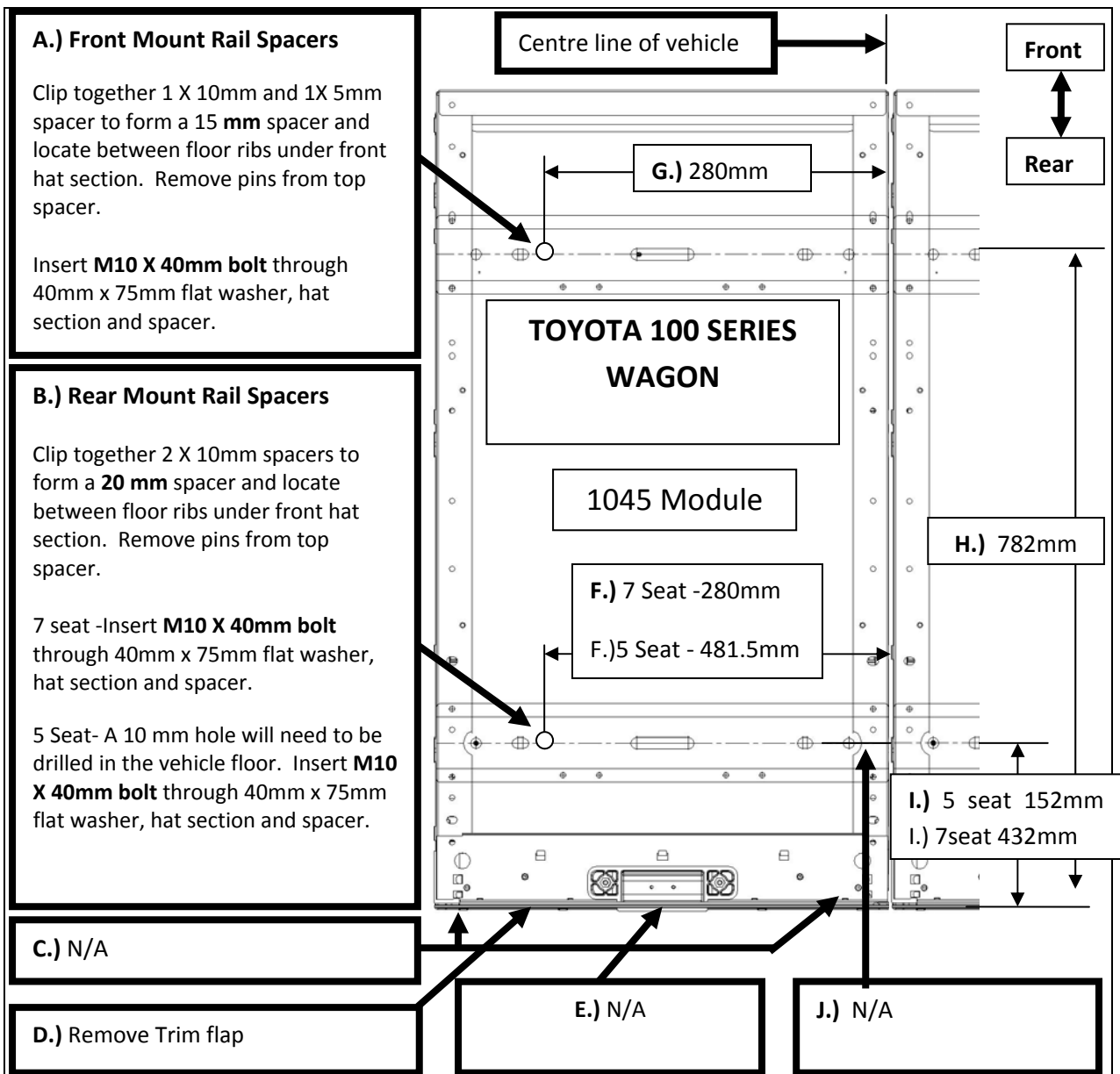
5 Seat- Insert **M10 X 40mm bolt** through 40mm x 75mm flat washer, hat section and spacer. Use weatherproof plates and nuts underneath vehicle.



2.15/- Return to General instructions step 3 to complete installation. The General instructions are supplied with the Outback Solutions Drawer Modules and are also available from your ARB stockist.

Vehicle Specific Instructions

Vehicle Specific Diagram



TOYOTA 76 SERIES WAGON 2007 ON

A.)	15mm Spacers	F.) 5/7 Seat models	481.5/280 mm
B.)	20mm Spacers	G.)	280mm
C.)	N/A	H.)	782 mm
D.)	Remove Trim	I.) 5/7 Seat models	152 /432 mm
E.)	N/A	J.)	N/A

Caution: - Confirm measurements and check for items such as fuel lines, break lines, fuel tanks, spare tires and non standard accessories before drilling holes in vehicle. It is the responsibility of the fitter to ensure that drilling on the vehicle will not damage vehicle components.