

OUTBACK SOLUTIONS

Modular Roller Drawer Systems by ARB

SIDE FLOOR KIT INSTALLATION:

1. Side bracket installation:

Bolt side brackets onto outsides of bearing channels using four (4) 6mm x 20mm hexagon head bolts.

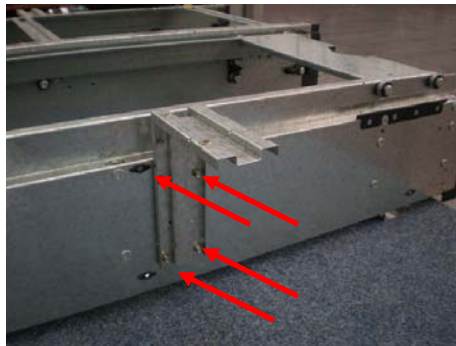
2. Fixed Floor Modules:

Loosely fasten two of the 6mm bolts into the two captive nuts inserted in outsides sides of bearing channels, slip the two top holes in side bracket over bolt heads, from inside of bearing channels fasten bottom of side bracket into the two captive nuts in bracket.



3. Roller Floor Modules:

From inside of bearing channels fasten top and bottom of side bracket into the four captive nuts in bracket.



4. Front Wing Panel Installation:

Bolt the two right angle floor support brackets onto **front** of drawer frame by removing and using the existing two top outside 8mm hexagon head bolts, spring and flat washers in **front** of drawer frame



5. Side Fill Panel fixing position:

Position side fill panel onto outside of bearing channels by pushing/positioning side panels in from **front** of vehicle this allows carpet to fold back neatly against interior trim of vehicle.

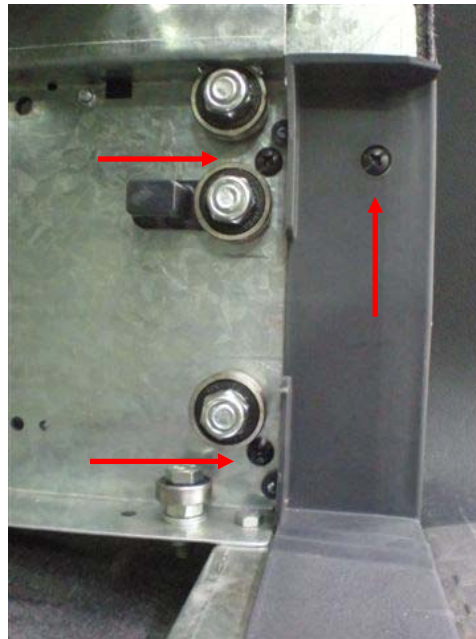


6. Side Fill Panel fastening:

Fasten Side Fill Panel to outside of bearing channel using three (3) 6mm x 20mm **black** round head set screws.

First fasten through **top** hole in plastic fascia panel into captive nut in Side Fill Panel.

Second, fasten through holes in outside bearing channel located **top** and **bottom** of front bearings



7. Side Floor installation:

Using a 4mm hexagon head Allen key....

First fasten **fixed** floor section of floor onto Front Wing Panel and Side Bracket using four (4) **black** countersunk set screws.

Second clip the **front** locator clips on **removable** floor section into slots in side bracket, fasten **rear** end down using quarter turn latch

